

OK-VISE®

FIXTURING CONCEPT

Multi-Rail RH System



GENERIC FIXTURING COMPONENTS

ALL BASED ON
ORIGINAL
OK-VISE®
Clamping Method





OK-VISE MULTI-RAIL RH SYSTEM

Multi-Rail RH is the new generic-purpose fixturing system from OK-VISE. Multi-Rail RH is optimal when the clamping force is over 4 tons and also when the workpieces are rather big.

FIXTURE SETS

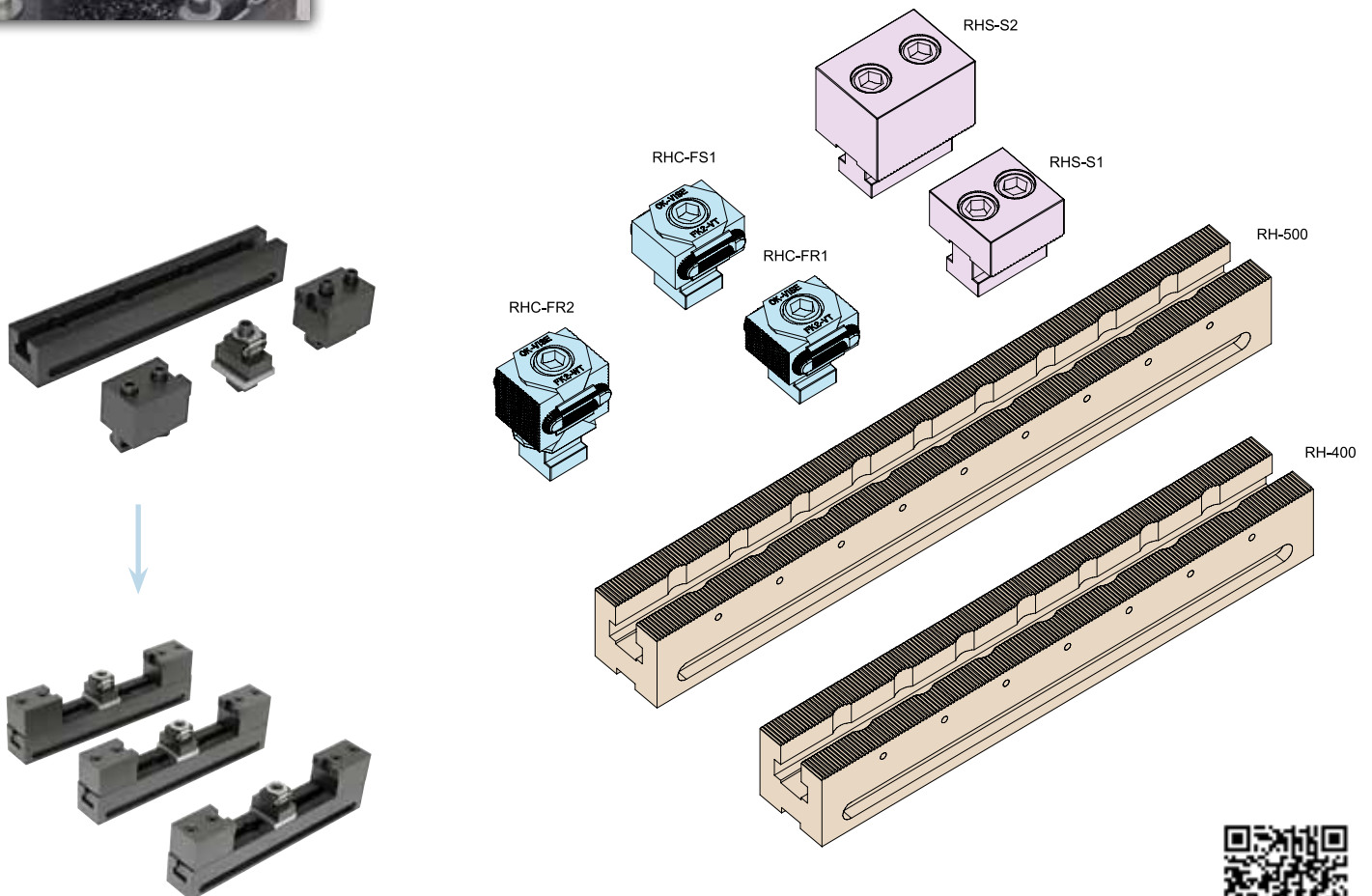
To make selection of the components easier, the OK-VISE team has created some basic sets to enable an easy start with the Multi-Rail system.

Compared to a traditional machine vise, the Multi-Rail RH system offers the following benefits:

- Using the components of the system, even the most challenging workpiece types can be machined.
- All sides of a workpiece can be machined with two setups.
- Multiple workpieces can be clamped on the same area.
- The workpiece is safely fixtured under all conditions.
- It is also possible to fasten very large work pieces.

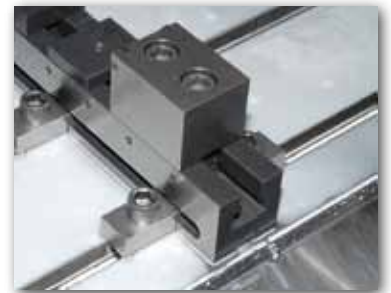
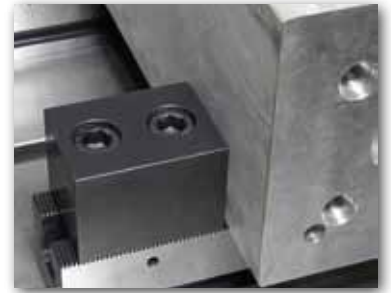
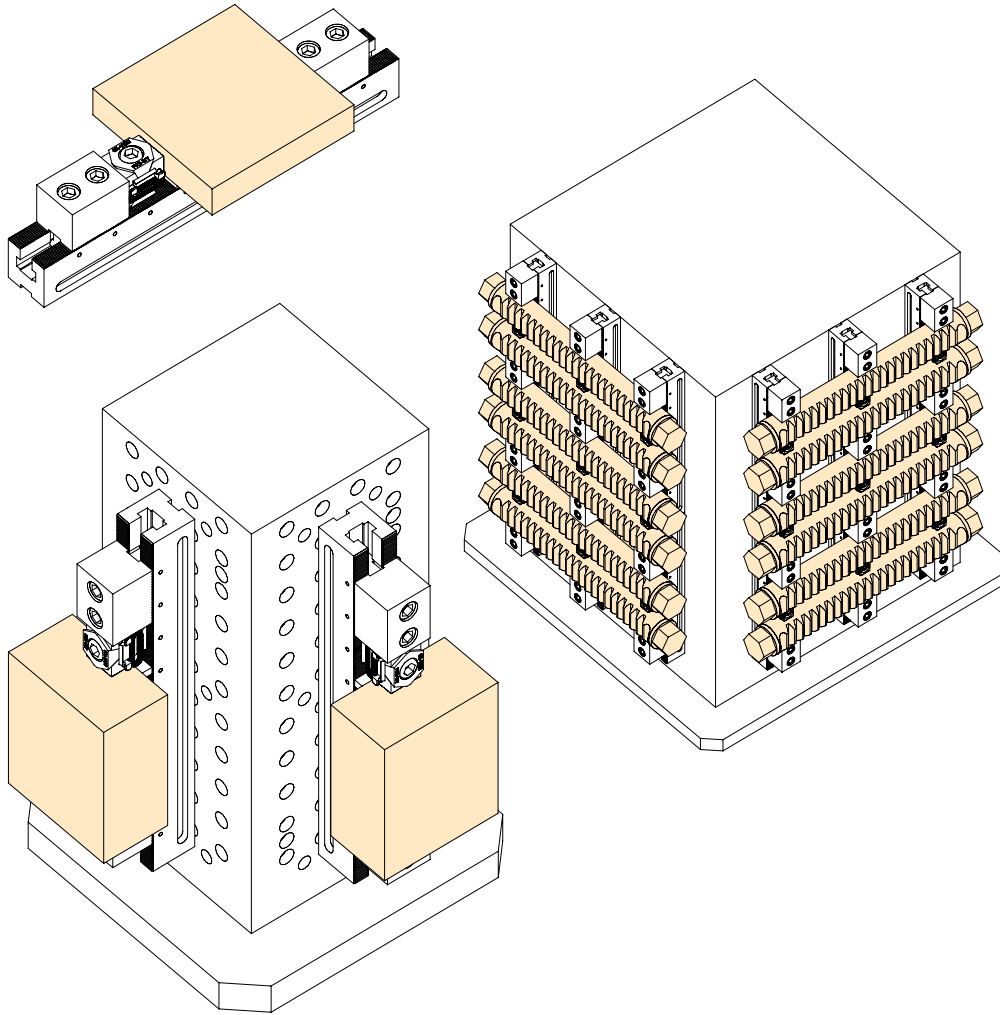


MULTI-RAIL SYSTEM COMPONENTS

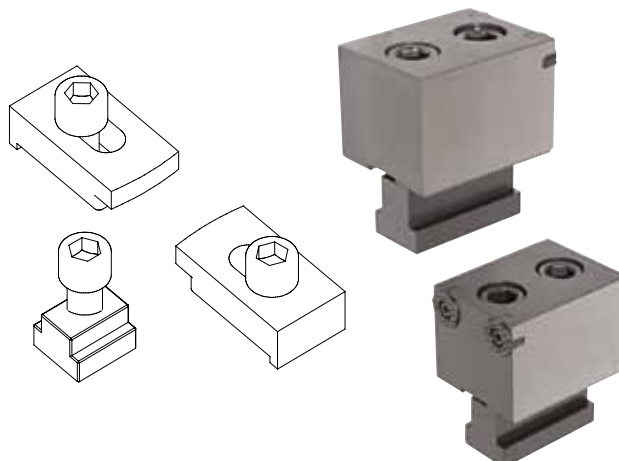


MULTI-RAIL RH SYSTEM APPLICATIONS

In a modular system all the functions of a fixture are separated into individual modules. This means that when workpiece material, form or size changes, the modules of the fixture can be changed independently of each other. Using a well-chosen collection of basic modules – a set – a huge variety of workpieces can be clamped simply using the same modules.



We also offer installation sets for the most typical platforms like T-slot tables and grid systems.



OK-VISE FIXTURING CONCEPT

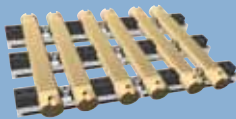
All platforms, All workpieces

GENERIC FIXTURING CONCEPTS

Multi-Rail RM System



Multi-Rail RH System



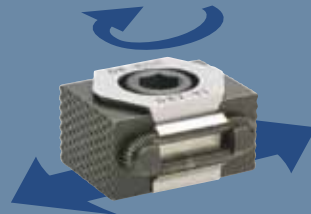
Grid Fixturing System



Combo-Rail



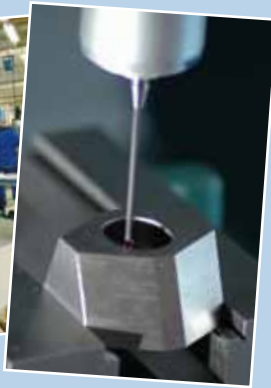
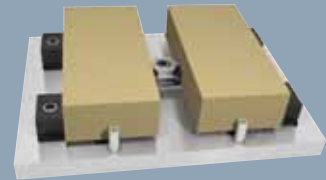
LOW-PROFILE CLAMPS



OK-VISE®
Clamping Method

COMPONENTS FOR DEDICATED FIXTURING

Blank Fixturing System



The original OK-VISE low-profile clamps are known worldwide as a core component of any modern workholding system. In the machining industry, the OK-VISE name means quality.

The mother company of OK-VISE OY is Kytola Instruments. The company is known for manufacturing precision instruments.

www.kytola.com

MANUFACTURER

OK-VISE®

OK-Vise Oy, P.O.Box 5
40951 Muurame, Finland
Tel. +358 20 7790 699, Fax +358 14 631 419
Technical questions: support@ok-vise.com
www.ok-vise.com

DISTRIBUTOR