

# OK-VISE®

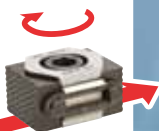
## FIXTURING CONCEPT

### Blank Fixturing System



COMPONENTS FOR DEDICATED FIXTURING

ALL BASED ON  
ORIGINAL  
**OK-VISE®**  
Clamping Method



## OK-VISE BLANK FIXTURING SYSTEM

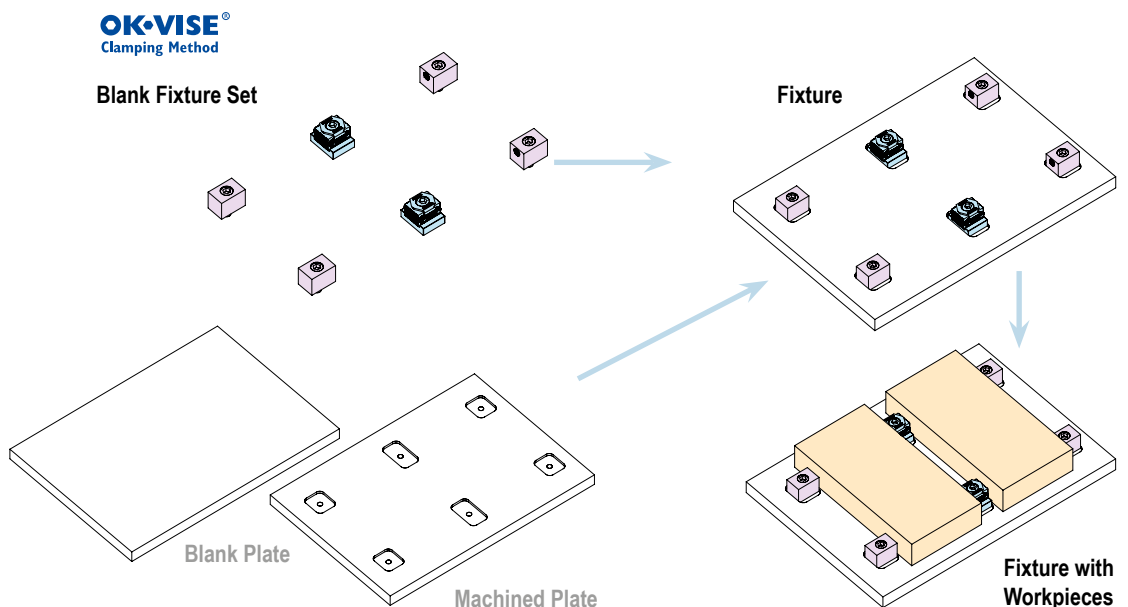
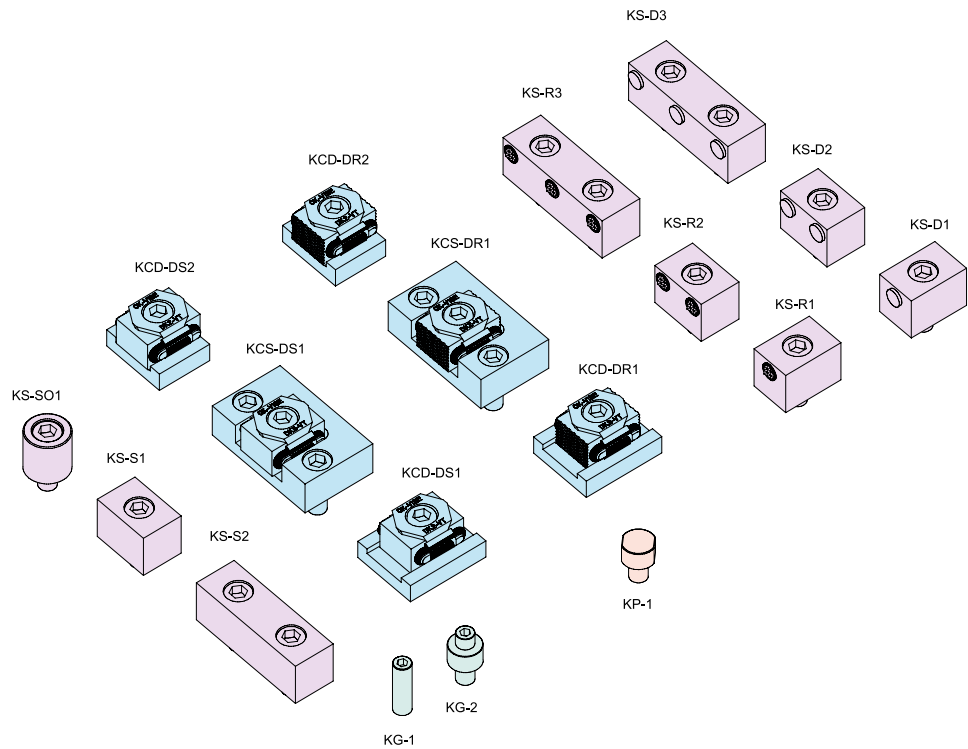
The OK-VISE Blank Fixturing System is designed for cases when dedicated (product-specific) fixtures are needed. This is typical in high-volume production. Blank plates are used as a platform on which to build the fixture. Aluminium and steel blanks are recommended.

In addition to OK-VISE low-profile clamps and bolts, a variety of components are now available. Various clamp modules, stopper modules, side guides and parallels (or riser blocks) are the basic modules of the system. High-friction jaws in stopper modules and clamps ensure reliable clamping when high machining forces are used.

When sensitive contact with the workpiece is a must, then smooth, diamond-surface or contour-machined jaws are optimal. **Now designing dedicated fixtures is easier than ever.**

## BLANK SYSTEM COMPONENTS

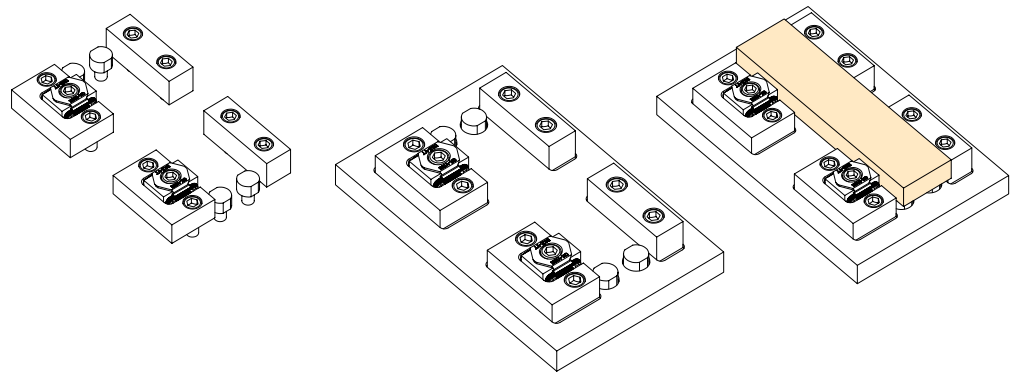
### Machined pockets



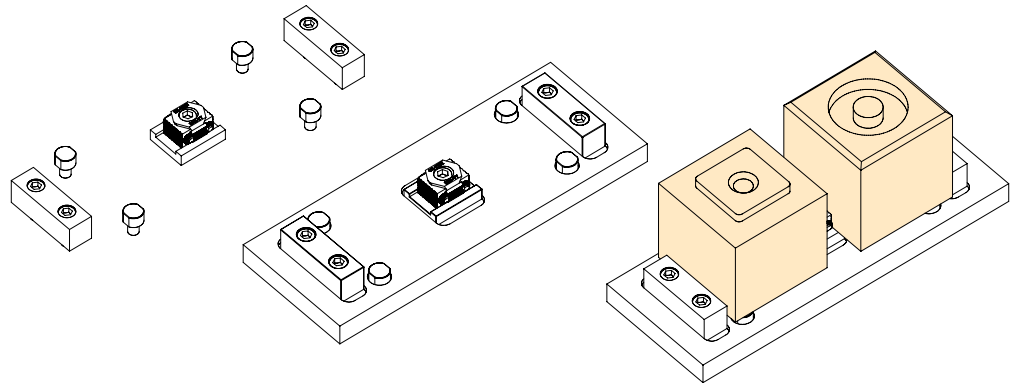
## FIXTURE SETS

To make selection of the components easier, the OK-VISE team has selected some basic sets to enable an easy start with the Blank system. In the pictures below you can see the solutions done with each set.

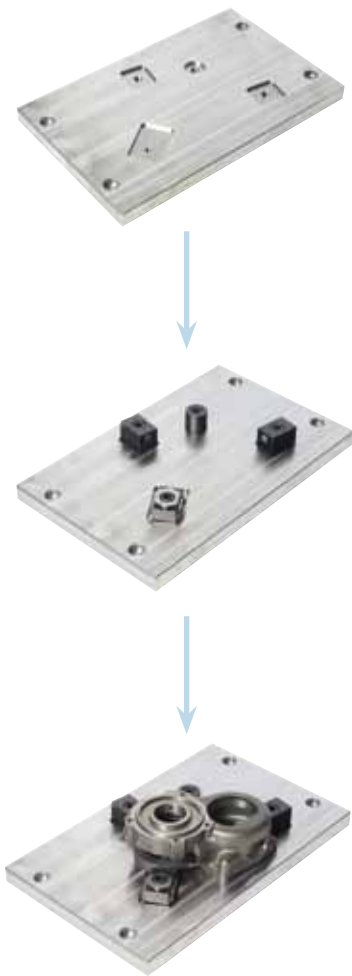
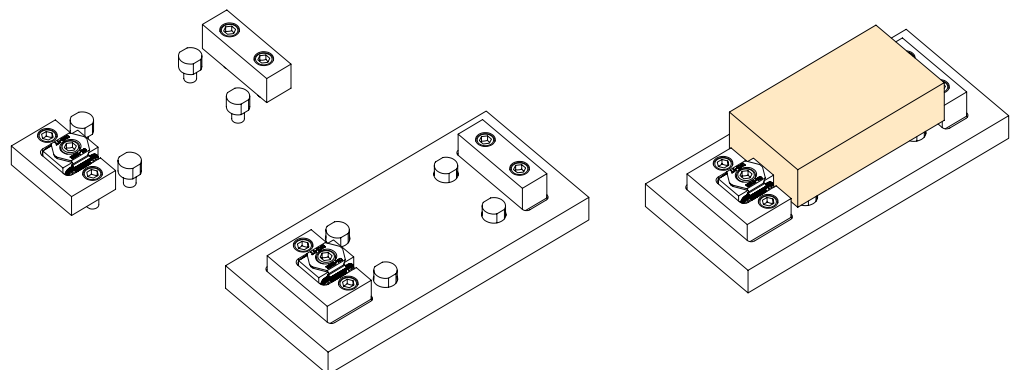
### SK-Z7



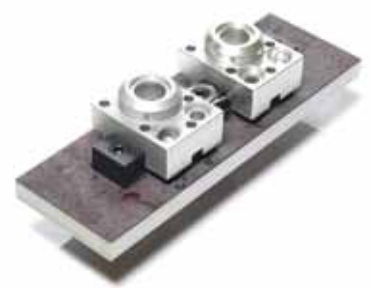
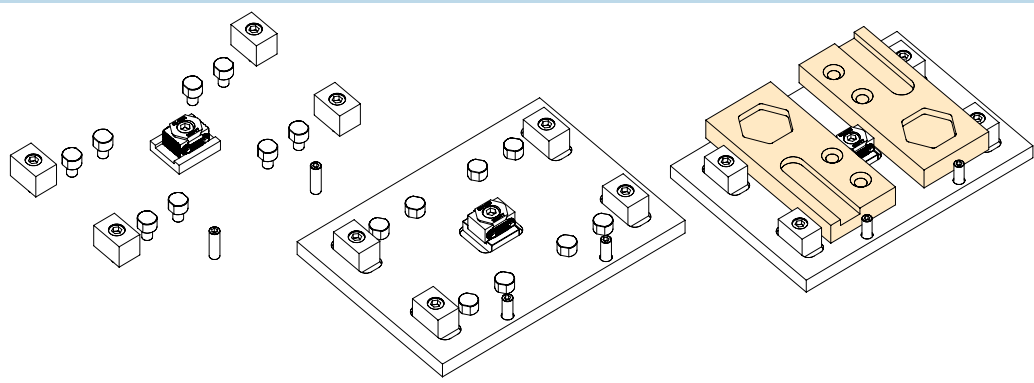
### SK-Z2



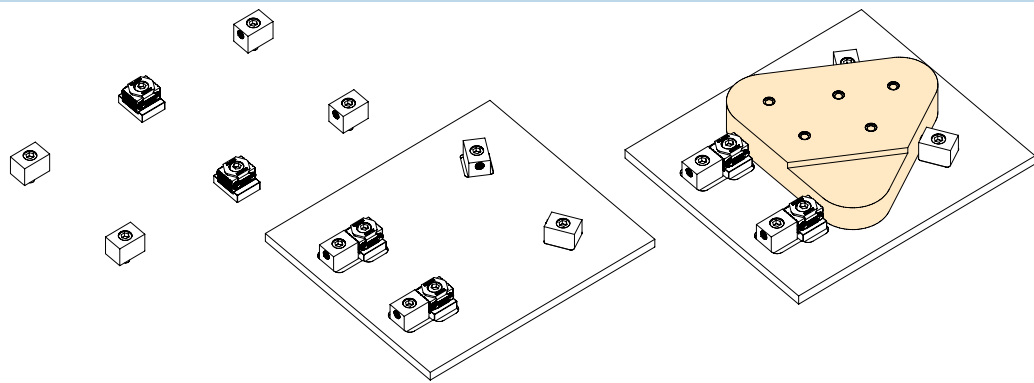
### SK-Z8



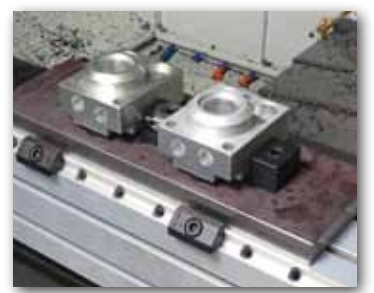
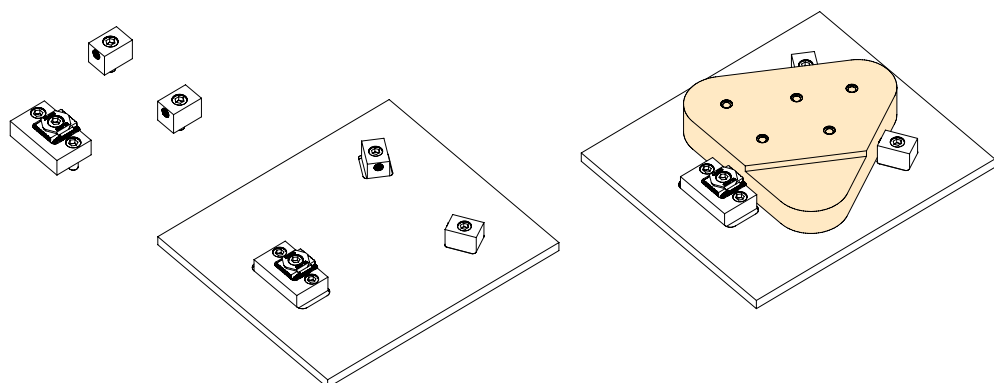
SK-Z4



SK-Z5



SRM-Z6



Blank System Components

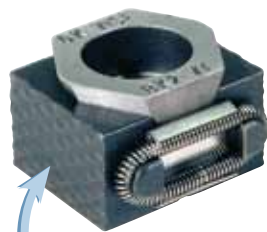


OK-VISE low-profile clamps are the core component of our Blank system. Our low-profile clamps are available with various jaw types.

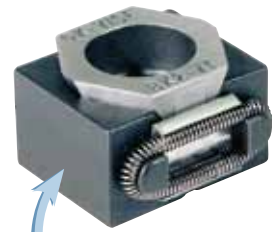


**PULL-DOWN MODELS**

**CLAMPS WITH MACHINABLE JAWS**



**CLAMPS WITH SERRATED JAWS**



**CLAMPS WITH SMOOTH JAWS**



**ADDITIONAL PIECE MODELS**



**CLAMPS WITH SELF-ADJUSTABLE JAWS**

More info:  
<http://www.ok-vice.com/blank-system/>



# OK-VISE FIXTURING CONCEPT

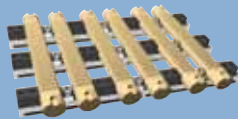
All platforms, All workpieces

## GENERIC FIXTURING CONCEPTS

Multi-Rail RM System



Multi-Rail RH System



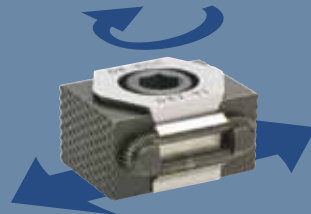
Grid Fixturing System



Combo-Rail



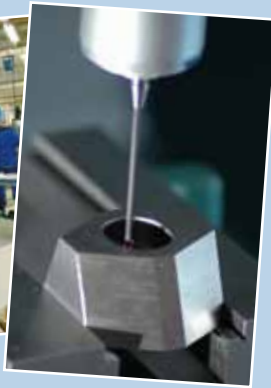
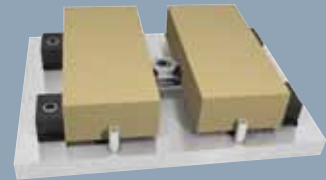
## LOW-PROFILE CLAMPS



**OK-VISE®**  
Clamping Method

## COMPONENTS FOR DEDICATED FIXTURING

Blank Fixturing System



The original OK-VISE low-profile clamps are known worldwide as a core component of any modern workholding system. In the machining industry, the OK-VISE name means quality.

The mother company of OK-VISE OY is Kytola Instruments. The company is known for manufacturing precision instruments.

[www.kytola.com](http://www.kytola.com)

MANUFACTURER

**OK-VISE®**

OK-Vise Oy, P.O.Box 5  
40951 Muurame, Finland  
Tel. +358 20 7790 699, Fax +358 14 631 419  
Technical questions: [support@ok-vise.com](mailto:support@ok-vise.com)  
[www.ok-vise.com](http://www.ok-vise.com)

DISTRIBUTOR